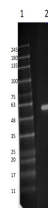


Product Datasheet

MEK1 (RABBIT) Antibody Fluorescein Conjugated GRP3989

Description	Anti-MEK1 (RABBIT) Antibody Fluorescein Conjugated
Species/Host	Rabbit
Reactivity	Human, Mouse, Rat
Conjugation	FITC
Tested Applications	ELISA, IHC-P, WB
Form/Appearance	0.02 M Potassium Phosphate, 0.15 M Sodium Chloride, pH 7.2
Concentration	1.0 mg/mL
Note	For research use only.
Isotype	IgG
Clonality	Polyclonal
Source	Anti-MEK1 Antibody was produced in rabbits by repeated immunizations with synthetic peptide corresponding to amino acid residues near the C-terminus conjugated to KLH.
Uniprot ID	Q02750
Dilution Range	ELISA: 1:40,000, FLISA: 1:40,000, Fluorochrome: 3.15, Immunochemistry: 1:100, Western Blot: 1 µg /ml
Application Notes	Anti-MEK 1 (RABBIT) antibody is suitable for use in ELISA and Western Blotting. Specific conditions of reactivity should be optimized by the end user. Expect a band of approximately 43.5 kDa.



Western Blot of Rabbit Anti-MEK1 (C-term) FITC Conjugated Antibody