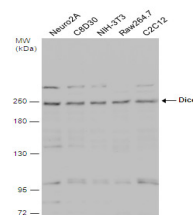


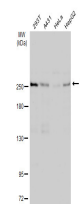
## Product Datasheet

### Dicer antibody GRP76

|                            |                                                                                                                                                                                                                                                                                                                                                                                                                                                 |
|----------------------------|-------------------------------------------------------------------------------------------------------------------------------------------------------------------------------------------------------------------------------------------------------------------------------------------------------------------------------------------------------------------------------------------------------------------------------------------------|
| <b>Description</b>         | This gene encodes a protein possessing an RNA helicase motif containing a DEXH box in its amino terminus and an RNA motif in the carboxy terminus. The encoded protein functions as a ribonuclease and is required by the RNA interference and small temporal RNA (stRNA) pathways to produce the active small RNA component that represses gene expression. Alternative splicing results in multiple transcript variants. [provided by RefSeq] |
| <b>Species/Host</b>        | Rabbit                                                                                                                                                                                                                                                                                                                                                                                                                                          |
| <b>Reactivity</b>          | Human, Mouse                                                                                                                                                                                                                                                                                                                                                                                                                                    |
| <b>Conjugation</b>         | Unconjugated                                                                                                                                                                                                                                                                                                                                                                                                                                    |
| <b>Tested Applications</b> | WB                                                                                                                                                                                                                                                                                                                                                                                                                                              |
| <b>Immunogen</b>           | Recombinant protein encompassing a sequence within the center region of human Dicer. The exact sequence is proprietary.                                                                                                                                                                                                                                                                                                                         |
| <b>Form/Appearance</b>     | Liquid: 1XPBS, 20% Glycerol (pH7). 0.025% ProClin 300 was added as a preservative.                                                                                                                                                                                                                                                                                                                                                              |
| <b>Concentration</b>       | 0.7 mg/ml                                                                                                                                                                                                                                                                                                                                                                                                                                       |
| <b>Storage</b>             | Store as concentrated solution. Centrifuge briefly prior to opening vial. For short-term storage (1-2 weeks), store at 4°C. For long-term storage, aliquot and store at -20°C or below. Avoid multiple freeze-thaw cycles.                                                                                                                                                                                                                      |
| <b>Note</b>                | For research use only.                                                                                                                                                                                                                                                                                                                                                                                                                          |
| <b>Isotype</b>             | IgG                                                                                                                                                                                                                                                                                                                                                                                                                                             |
| <b>Clonality</b>           | Polyclonal                                                                                                                                                                                                                                                                                                                                                                                                                                      |
| <b>Purity</b>              | Purified by antigen-affinity chromatography.                                                                                                                                                                                                                                                                                                                                                                                                    |
| <b>Uniprot ID</b>          | <b>Q9UPY3</b>                                                                                                                                                                                                                                                                                                                                                                                                                                   |
| <b>Entrez</b>              | <b>23405</b>                                                                                                                                                                                                                                                                                                                                                                                                                                    |
| <b>Dilution Range</b>      | WB: 1:500-1:3000                                                                                                                                                                                                                                                                                                                                                                                                                                |



Various whole cell extracts (30 µg) were separated by 5% SDS-PAGE, and the membrane was blotted with Dicer antibody (GRP528) diluted at 1:500. The HRP-conjugated anti-rabbit IgG antibody was used to detect the primary antibody.



Various whole cell extracts (30 µg) were separated by 5% SDS-PAGE, and the membrane was blotted with Dicer antibody (GRP528) diluted at 1:1000. The HRP-conjugated anti-rabbit IgG antibody was used to detect the primary antibody.