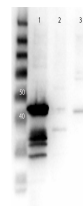


## Product Datasheet

### MEK1 (RABBIT) Antibody GRP3738

|                            |   |
|----------------------------|---|
| <b>Description</b>         | Anti-MEK1 (RABBIT) Antibody   |
| <b>Species/Host</b>        | Rabbit  |
| <b>Reactivity</b>          | Human, Mouse, Rat   |
| <b>Conjugation</b>         | Unconjugated  |
| <b>Tested Applications</b> | ELISA, WB   |
| <b>Form/Appearance</b>     | 0.02 M Potassium Phosphate, 0.15 M Sodium Chloride, pH 7.2  |
| <b>Concentration</b>       | 1.05 mg/mL  |
| <b>Storage</b>             | Store vial at -20 °C prior to opening. This product is stable at 4 °C as an undiluted liquid. For extended storage, aliquot contents and freeze at -20 °C or below. Avoid cycles of freezing and thawing. Dilute only prior to immediate use. |
| <b>Note</b>                | For research use only.  |
| <b>Isotype</b>             | IgG   |
| <b>Clonality</b>           | Polyclonal  |
| <b>Source</b>              | Anti-MEK1 Antibody was produced in rabbits by repeated immunizations with synthetic peptide corresponding to amino acid residues near the N-terminus conjugated to KLH.   |
| <b>Uniprot ID</b>          | <b>Q02750</b>   |
| <b>Dilution Range</b>      | ELISA: 5 ug/mL, Western Blot: 1:1000  |

**Application Notes** Anti-MEK 1 (RABBIT) antibody is suitable for use in ELISA and Western Blotting. Specific conditions of reactivity should be optimized by the end user. Expect a band of approximately 43.5 kDa.



Western Blot of Anti-MEK1  
N  
Term Antibody