

Product Datasheet

MEK1 (MOUSE) Monoclonal Antibody GRP2141

Description Anti-MEK1 (MOUSE) Monoclonal Antibody

Species/Host Mouse

Reactivity Human, Mouse, Rat

Conjugation Unconjugated

Tested Applications ELISA, WB

Form/Appearance 0.02 M Potassium Phosphate, 0.15 M Sodium Chloride, pH 7.2

Concentration 1.0 mg/ml

Note For research use only.

Isotype IgG

Clonality Monoclonal

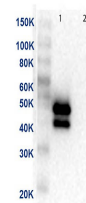
Source Anti-MEK1 Monoclonal Antibody was produced in mice by repeated immunizations with synthetic peptide corresponding to amino acid residues near the C-terminus conjugated to KLH.

Clone ID 13B6.G12

Uniprot ID [Q02750](#)

Dilution Range ELISA: 1:40,000, Western Blot: 1µg /mL

Application Notes Anti-MEK 1 (MOUSE) antibody is suitable for use in ELISA and Western Blotting. Specific conditions of reactivity should be optimized by the end user. Expect a band of approximately 43.5 kDa.



Western Blot of MEK1
Antibody