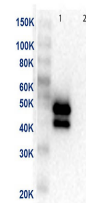


Product Datasheet

MEK1 (MOUSE) Monoclonal Antibody GRP2140

Description	Anti-MEK1 (MOUSE) Monoclonal Antibody
Species/Host	Mouse
Reactivity	Human, Mouse, Rat
Conjugation	Unconjugated
Tested Applications	ELISA, WB
Form/Appearance	0.02 M Potassium Phosphate, 0.15 M Sodium Chloride, pH 7.2
Concentration	1.0mg/ml
Storage	Store vial at -20 °C prior to opening. This product is stable at 4 °C as an undiluted liquid. For extended storage, aliquot contents and freeze at -20 °C or below. Avoid cycles of freezing and thawing. Dilute only prior to immediate use.
Note	For research use only.
Isotype	IgG
Clonality	Monoclonal
Source	Anti-MEK1 Monoclonal Antibody was produced in mice by repeated immunizations with synthetic peptide corresponding to amino acid residues near the C-terminus conjugated to KLH.
Clone ID	13B6.G12
Uniprot ID	Q02750
Dilution Range	ELISA: 1:40,000, Western Blot: 1µg /mL
Application Notes	Anti-MEK 1 (MOUSE) antibody is suitable for use in Western Blotting. Specific conditions of reactivity should be optimized by the end user. Expect a band of approximately 43.5 kDa.



Western Blot of MEK1
Antibody