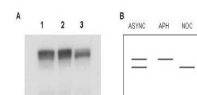


Product Datasheet

MCM2 (RABBIT) Antibody GRP3535

Description	Anti-MCM2 (RABBIT) Antibody
Species/Host	Rabbit
Reactivity	Human
Conjugation	Unconjugated
Tested Applications	ELISA, WB
Form/Appearance	0.02 M Potassium Phosphate, 0.15 M Sodium Chloride, pH 7.2
Concentration	0.98 mg/mL
Note	For research use only.
Isotype	IgG
Clonality	Polyclonal
Source	This affinity purified antibody was prepared from whole rabbit serum produced by repeated immunizations with a synthetic peptide corresponding to an N-Terminal region near amino acids 15-40 of human MCM2 protein.
Uniprot ID	P49736
Entrez	https://www.ncbi.nlm.nih.gov/gene//4171
Dilution Range	ELISA: 1:10,000 - 1:50,000, Western Blot: 1:500 - 1:2,000



Anti-MCM2 Antibody -
Western
Blot