

Product Datasheet

MALTOSE BINDING PROTEIN (MBP) EPI TOPE TAG (RABBIT) Antibody Biotin Conjugated GRP2470

Description Anti-MALTOSE BINDING PROTEIN (MBP) EPI TOPE TAG (RABBIT) Antibody Biotin Conjugated

Species/Host Rabbit

Conjugation Biotin

Tested Applications ELISA, WB

Form/Appearance 0.02 M Potassium Phosphate, 0.15 M Sodium Chloride, pH 7.2

Concentration 1.0 mg/mL

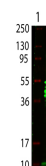
Note For research use only.

Isotype IgG

Clonality Polyclonal

Source This antibody was purified from whole rabbit serum prepared by repeated immunizations with the MBP epitope tag recombinant protein.

Dilution Range ELISA: 1:10,000-1:50,000,Western Blot: 1:1,000-1:5,000



Rb Anti-Maltose Binding Protein Antibody - Western Blot