

## Product Datasheet

### MALTOSE BINDING PROTEIN (MBP) EPI TOPE TAG (RABBIT) Antibody GRP2299

**Description** Anti-MALTOSE BINDING PROTEIN (MBP) EPI TOPE TAG (RABBIT) Antibody

**Species/Host** Rabbit

**Conjugation** Unconjugated

**Tested Applications** ELISA, WB

**Form/Appearance** 0.02 M Potassium Phosphate, 0.15 M Sodium Chloride, pH 7.2

**Concentration** 1.0 mg/mL

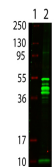
**Note** For research use only.

**Isotype** IgG

**Clonality** Polyclonal

**Source** This antibody was purified from whole rabbit serum prepared by repeated immunizations with the MBP epitope tag recombinant protein.

**Dilution Range** ELISA: 1:10,000-1:50,000,Western Blot: 1:1,000-1:5,000



Rb Anti-Maltose Binding Protein Antibody - Western Blot