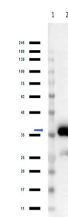


## Product Datasheet

# MALATE DEHYDROGENASE (Pig Heart) (SHEEP) Antibody Peroxidase Conjugated GRP2744

<b>Description</b>	Anti-MALATE DEHYDROGENASE (Pig Heart) (SHEEP) Antibody Peroxidase Conjugated
<b>Species/Host</b>	Sheep
<b>Reactivity</b>	Pig
<b>Conjugation</b>	HRP
<b>Tested Applications</b>	ELISA, IHC-P, IP, WB
<b>Form/Appearance</b>	0.02 M Potassium Phosphate, 0.15 M Sodium Chloride, pH 7.2
<b>Concentration</b>	1 mg/mL
<b>Note</b>	For research use only.
<b>Isotype</b>	IgG
<b>Clonality</b>	Polyclonal
<b>Source</b>	Malate Dehydrogenase [Pig Heart]
<b>Uniprot ID</b>	<b>P11708</b>
<b>Entrez</b>	<a href="https://www.ncbi.nlm.nih.gov/gene//396894">https://www.ncbi.nlm.nih.gov/gene//396894</a>
<b>Dilution Range</b>	ELISA: 1:500 - 1:1,000, Immunochemistry: 1:500 - 1:2,500, Immunoprecipitation: 1:100, Western Blot: 1:1,000 - 1:5,000
<b>Application Notes</b>	Anti-Malate Dehydrogenase is useful in ELISA, western blot, and immunohistochemistry. Optimal titers should be obtained by researchers.



Western Blot of Sheep  
Anti-Malate  
Dehydrogenase  
Antibody Peroxidase  
Conjugated