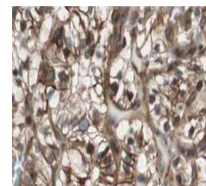


Product Datasheet

MAD2L2 (RABBIT) Antibody GRP3436

Description	Anti-MAD2L2 (RABBIT) Antibody
Species/Host	Rabbit
Reactivity	Human
Conjugation	Unconjugated
Tested Applications	ELISA, IHC-P, WB
Form/Appearance	0.02 M Potassium Phosphate, 0.15 M Sodium Chloride, pH 7.2
Concentration	0.68 mg/mL
Note	For research use only.
Isotype	IgG
Clonality	Polyclonal
Purity	This is an affinity purified antibody produced by immunoaffinity chromatography using the immunizing peptide after immobilization to a solid phase.
Source	This affinity purified antibody was prepared from whole rabbit serum produced by repeated immunizations with a synthetic peptide corresponding to an N-terminus region of Human MAD2L2.
Uniprot ID	Q9UI95
Entrez	https://www.ncbi.nlm.nih.gov/gene//187960072
Dilution Range	ELISA: 1:7,500 - 1:30,000, Immunochemistry: 1:500 - 1:2,000, Western Blot: 1:500 - 1:2,000



Anti-MAD2L2 Antibody -
Immunohistochemistry