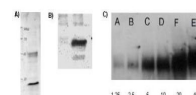


## Product Datasheet

### Lysine Acetylated (AcK) (RABBIT) Antibody GRP3550

|                            |  |
|----------------------------|--|
| <b>Description</b>         | Anti-Lysine Acetylated (AcK) (RABBIT) Antibody   |
| <b>Species/Host</b>        | Rabbit   |
| <b>Reactivity</b>          | Mouse  |
| <b>Conjugation</b>         | Unconjugated   |
| <b>Tested Applications</b> | ELISA, FC, IF, IHC-P, IP, WB   |
| <b>Form/Appearance</b>     | 0.02 M Potassium Phosphate, 0.15 M Sodium Chloride, pH 7.2   |
| <b>Concentration</b>       | 1.0 mg/ml  |
| <b>Note</b>                | For research use only.   |
| <b>Isotype</b>             | IgG  |
| <b>Clonality</b>           | Polyclonal   |
| <b>Source</b>              | Anti-Lysine Acetylated Antibody was prepared from whole rabbit serum produced by repeated immunizations with acetylated lysine conjugated KLH.   |
| <b>Dilution Range</b>      | ELISA: 1:1,000-1:2,500, Flow Cytometry: User Optimized, Immunocytochemistry: User Optimized, IF Microscopy: User Optimized, Immunoprecipitation: 10 µg /mg protein sample, Western Blot: 1:500-1:1,000   |
| <b>Application Notes</b>   | Anti-Lysine Acetylated Antibody is suitable for use in ELISA, western blotting, immunofluorescence microscopy, and immunoprecipitation assays. Although not tested, this antibody is likely functional in RIA, flow cytometry, and immunohistochemistry. |



Anti-Acetylated Lysine (AcK) Antibody - Western Blot