

Product Datasheet

Low Molecular Weight E.Coli Protein Host Cell Protein (HCP) Antibody GRP2394

Description Anti-Low Molecular Weight E.Coli Protein Host Cell Protein (HCP) Antibody

Species/Host Rabbit

Reactivity E.Coli

Conjugation Unconjugated

Tested Applications ELISA, WB

Form/Appearance 0.02 M Potassium Phosphate, 0.15 M Sodium Chloride, pH 7.2

Concentration 1.29 mg/mL

Note For research use only.

Isotype IgG

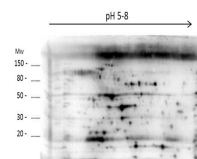
Clonality Polyclonal

Purity LMW Host Cell Protein A purified antibody is directed against low molecular weight E.coli Host Cell Proteins. The product was purified from monospecific antiserum by Protein A affinity chromatography.

Source Anti-LMW E.Coli Host Cell Proteins Antibody was prepared by repeated immunizations with a mixture low molecular weight (LMW) proteins from E.Coli (BL21).

Dilution Range ELISA: 1:1000-1:2000, Western Blot: 1:500-1:1000

Application Notes Anti-LMW Host Cell Proteins Antibody detects over 270 E.coli LMW proteins and is suitable for western blotting and ELISA.



2D Western Blot of anti-E.coli Low Molecular Weight Host Cell Protein antibody.