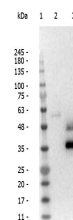


## Product Datasheet

### LLAMA IgG2 (RABBIT) Antibody GRP5390

<b>Description</b>	Anti-LLAMA IgG2 (RABBIT) Antibody
<b>Species/Host</b>	Rabbit
<b>Reactivity</b>	Llama
<b>Conjugation</b>	Unconjugated
<b>Tested Applications</b>	ELISA, IHC-P, WB
<b>Form/Appearance</b>	0.01 M Sodium Phosphate, 0.25 M Sodium Chloride, pH 7.2
<b>Concentration</b>	1.07 mg/ml
<b>Storage</b>	Store vial at -20 °C prior to opening. This product is stable at 4 °C as an undiluted liquid. For extended storage, aliquot contents and freeze at -20 °C or below. Avoid cycles of freezing and thawing. Dilute only prior to immediate use.
<b>Note</b>	For research use only.
<b>Isotype</b>	IgG
<b>Clonality</b>	Polyclonal
<b>Source</b>	Llama IgG2
<b>Dilution Range</b>	ELISA: 1:60,000, Immunochemistry: User Optimized, Western Blot: 1:20,000-1:40,000
<b>Application Notes</b>	Antibody Anti-Llama IgG2 is suitable for immunoblotting (western or dot blot), ELISA, and immunohistochemistry assays requiring lot-to-lot consistency.



Western blot of anti-Llama IgG2 antibody