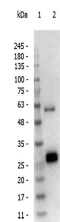


Product Datasheet

LLAMA IgG1 (RABBIT) Antibody GRP5389

Description	Anti-LLAMA IgG1 (RABBIT) Antibody
Species/Host	Rabbit
Reactivity	Llama
Conjugation	Unconjugated
Tested Applications	ELISA, IP, WB
Form/Appearance	0.02 M Potassium Phosphate, 0.15 M Sodium Chloride, pH 7.2
Concentration	1.0 mg/ml
Storage	Store vial at -20 °C prior to opening. This product is stable at 4 °C as an undiluted liquid. For extended storage, aliquot contents and freeze at -20 °C or below. Avoid cycles of freezing and thawing. Dilute only prior to immediate use.
Note	For research use only.
Isotype	IgG1
Clonality	Polyclonal
Source	Llama IgG1
Dilution Range	ELISA: 1 ug/ml, Immunoprecipitation: User Optimized, Western Blot: 1:20,000 or 1:40,000
Application Notes	Antibody Anti-Llama IgG1 is suitable for IEP, immunoblotting (western or dot blot), ELISA, and immunohistochemistry assays requiring lot-to-lot consistency.



Western blot of Anti-Llama IgG1 antibody