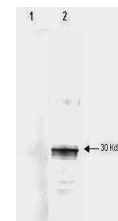


## Product Datasheet

### LEFTY A (MOUSE) Monoclonal Antibody GRP2055

<b>Description</b>	Anti-LEFTY A (MOUSE) Monoclonal Antibody
<b>Species/Host</b>	Mouse
<b>Reactivity</b>	Human
<b>Conjugation</b>	Unconjugated
<b>Tested Applications</b>	ELISA, WB
<b>Form/Appearance</b>	0.02 M Potassium Phosphate, 0.15 M Sodium Chloride, pH 7.2
<b>Concentration</b>	1.0 mg/mL
<b>Note</b>	For research use only.
<b>Isotype</b>	IgG2a
<b>Clonality</b>	Monoclonal
<b>Source</b>	A BALB/c mouse was immunized with a recombinant form of 6X HIS tagged human LEFTY.
<b>Clone ID</b>	7C5G1H6H10
<b>Uniprot ID</b>	<b>O00292</b>
<b>Entrez</b>	<a href="https://www.ncbi.nlm.nih.gov/gene//7044">https://www.ncbi.nlm.nih.gov/gene//7044</a>
<b>Dilution Range</b>	ELISA: 1:5,000, Western Blot: 1:2,000

**Application Notes** This antibody is suitable for ELISA and western blotting. The antibody may be used for other applications, such as RIA, immunohistochemistry or immunoprecipitation, but specific reaction conditions have not been developed.



Anti-Human LEFTY  
Antibody -  
Western Blot