

Product Datasheet

L-ASPARAGINASE (RABBIT) Antibody GRP1652

Description L-asparaginase from E.coli has two isoenzymes: L-asparaginase I, a low-affinity enzyme located in the cytoplasm, and L-asparaginase II, a high-affinity secreted enzyme.

Species/Host Rabbit

Reactivity E.Coli

Conjugation Unconjugated

Tested Applications ELISA, IHC-P, WB

Form/Appearance 0.02 M Potassium Phosphate, 0.15 M Sodium Chloride, pH 7.2

Concentration 65 mg/mL

Note For research use only.

Isotype Antiserum

Clonality Polyclonal

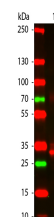
Source Asparaginase [Escherichia coli]

Uniprot ID **P00805**

Entrez <https://www.ncbi.nlm.nih.gov/gene//1039460>

Dilution Range ELISA: 1:20,000 - 1:100,000, Immunochemistry: User Optimized, Western Blot: 1:2,000 - 1:10,000

Application Notes Anti-L-asparaginase is suitable for use in ELISA, western blot, and immunohistochemistry. Specific conditions for reactivity should be optimized by the end user.



L-Asparaginase Antibody -
Western Blot