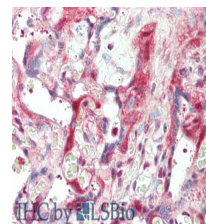


## Product Datasheet

### Laminin (RABBIT) Antibody GRP3347

<b>Description</b>	Anti-Laminin (RABBIT) Antibody
<b>Species/Host</b>	Rabbit
<b>Reactivity</b>	Human
<b>Conjugation</b>	Unconjugated
<b>Tested Applications</b>	ELISA, IHC-P, IP, WB
<b>Form/Appearance</b>	0.125 M Sodium Borate, 0.075 M Sodium Chloride, 0.005 M EDTA/ pH 8.0
<b>Concentration</b>	1.0 mg/mL
<b>Note</b>	For research use only.
<b>Isotype</b>	IgG
<b>Clonality</b>	Polyclonal
<b>Source</b>	Anti-Laminin Antibody was produced by repeated immunizations with a mixture of synthetic peptides corresponding to regions of adherence on laminin.
<b>Uniprot ID</b>	<b>P07942</b>
<b>Entrez</b>	<a href="https://www.ncbi.nlm.nih.gov/gene//3912">https://www.ncbi.nlm.nih.gov/gene//3912</a>
<b>Dilution Range</b>	ELISA: 1:4,000 - 1:8,000, Immunochemistry: 1:50 - 1:200, Immunoprecipitation: 1:100, Western Blot: 1:500 - 1:2,000
<b>Application Notes</b>	Anti-Laminin antibody is suitable for western blotting, IHC, IP and for ELISA. Researchers should determine optimal titers for applications that are not stated below.



Immunohistochemistry of  
rabbit  
anti-Laminin antibody