

## Product Datasheet

# LACTATE DEHYDROGENASE (Rabbit Muscle) (GOAT) Antibody Peroxidase Conjugated GRP2007

**Description** Anti-LACTATE DEHYDROGENASE (Rabbit Muscle) (GOAT) Antibody Peroxidase Conjugated

**Species/Host** Goat

**Reactivity** Rabbit

**Conjugation** HRP

**Tested Applications** ELISA, IHC-P, IP, WB

**Form/Appearance** 0.02 M Potassium Phosphate, 0.15 M Sodium Chloride, pH 7.2

**Concentration** 1.0 mg/mL

**Note** For research use only.

**Isotype** IgG

**Clonality** Polyclonal

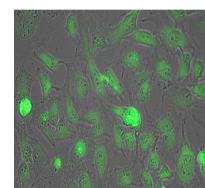
**Source** Anti-Lactate Dehydrogenase Antibody was produced by repeated immunizations with rabbit muscle Lactate Dehydrogenase full length protein.

**Uniprot ID** **P13491**

**Entrez** <https://www.ncbi.nlm.nih.gov/gene/100009107>

**Dilution Range** ELISA: 1:3,000, Immunochemistry: 1:500 - 1:2,500, Immunoprecipitation: 1:100, Western Blot: 1:1,000 - 1:6,000

**Application Notes** Anti-Lactate Dehydrogenase Antibody is suitable for western blotting, IP, IHC and for ELISA. Researchers should determine optimal titers for applications that are not stated below.



Anti-Lactate  
Dehydrogenase  
Antibody Peroxidase  
Conjugated  
- Immunofluorescence