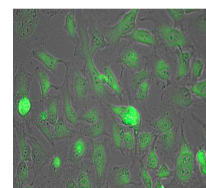


## Product Datasheet

# LACTATE DEHYDROGENASE (Rabbit Muscle) (GOAT) Antibody GRP1983

<b>Description</b>	Anti-LACTATE DEHYDROGENASE (Rabbit Muscle) (GOAT) Antibody
<b>Species/Host</b>	Goat
<b>Reactivity</b>	Human, Rabbit
<b>Conjugation</b>	Unconjugated
<b>Tested Applications</b>	ELISA, IF, IP, WB
<b>Form/Appearance</b>	0.02 M Potassium Phosphate, 0.15 M Sodium Chloride, pH 7.2
<b>Concentration</b>	1.0 mg/ml
<b>Note</b>	For research use only.
<b>Isotype</b>	IgG
<b>Clonality</b>	Polyclonal
<b>Source</b>	This antibody was prepared from whole goat serum produced by repeated immunizations with a full length lactate dehydrogenase protein isolated from rabbit muscle.
<b>Uniprot ID</b>	<b>P13491</b>
<b>Entrez</b>	<a href="https://www.ncbi.nlm.nih.gov/gene/100009107">https://www.ncbi.nlm.nih.gov/gene/100009107</a>
<b>Dilution Range</b>	ELISA: 1:2,000 - 1:10,000, IF Microscopy: 1:200, Immunoprecipitation: 1:100, Western Blot: 1:1,000 - 1:5,000



Lactate Dehydrogenase  
Antibody-Immunofluorescence