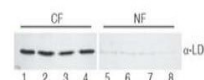


## Product Datasheet

# LACTATE DEHYDROGENASE (Rabbit Muscle) (GOAT) Antibody GRP1478

<b>Species/Host</b>	Goat
<b>Reactivity</b>	Human
<b>Conjugation</b>	Unconjugated
<b>Tested Applications</b>	ELISA, IP, WB
<b>Form/Appearance</b>	0.02 M Potassium Phosphate, 0.15 M Sodium Chloride, pH 7.2
<b>Concentration</b>	82 mg/mL
<b>Note</b>	For research use only.
<b>Isotype</b>	Antiserum
<b>Clonality</b>	Polyclonal
<b>Source</b>	This antibody was prepared from whole goat serum produced by repeated immunizations with a full length lactate dehydrogenase protein isolated from rabbit muscle.
<b>Uniprot ID</b>	<b>P13491</b>
<b>Entrez</b>	<a href="https://www.ncbi.nlm.nih.gov/gene/100009107">https://www.ncbi.nlm.nih.gov/gene/100009107</a>
<b>Dilution Range</b>	ELISA: 1:4,000 - 1:20,000, Immunoprecipitation: 1:100, Western Blot: 1:500 - 1:2,000



Anti-Lactate  
Dehydrogenase  
Antibody - Western Blot