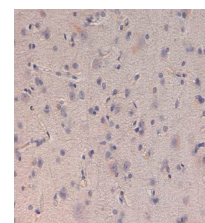


## Product Datasheet

### Kinesin-1 (Rabbit) Antibody GRP1582

<b>Species/Host</b>	Rabbit
<b>Reactivity</b>	Human
<b>Conjugation</b>	Unconjugated
<b>Tested Applications</b>	ELISA, IHC-P, WB
<b>Form/Appearance</b>	0.02 M Potassium Phosphate, 0.15 M Sodium Chloride, pH 7.2
<b>Concentration</b>	77 mg/mL
<b>Note</b>	For research use only.
<b>Isotype</b>	Antiserum
<b>Clonality</b>	Polyclonal
<b>Source</b>	Anti-Kinesin-1 was prepared from whole rabbit serum produced by repeated immunizations with a truncated kinesin-1 construct expressed in E. coli corresponding to human kinesin-1 protein.
<b>Uniprot ID</b>	<b>P33176</b>
<b>Entrez</b>	<a href="https://www.ncbi.nlm.nih.gov/gene//3799">https://www.ncbi.nlm.nih.gov/gene//3799</a>
<b>Dilution Range</b>	ELISA: 1:10000, Immunochemistry: User Optimized, Western Blot: 1:100-1:500



IHC Kinesin-1 Antibody  
(whole antiserum)