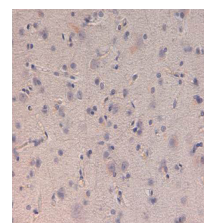


Product Datasheet

Kinesin-1 (Rabbit) Antibody GRP1581

Species/Host	Rabbit
Reactivity	Human
Conjugation	Unconjugated
Tested Applications	ELISA, IHC-P, WB
Form/Appearance	0.02 M Potassium Phosphate, 0.15 M Sodium Chloride, pH 7.2
Concentration	77 mg/mL
Note	For research use only.
Isotype	Antiserum
Clonality	Polyclonal
Source	Anti-Kinesin-1 was prepared from whole rabbit serum produced by repeated immunizations with a truncated kinesin-1 construct expressed in E. coli corresponding to human kinesin-1 protein.
Uniprot ID	P33176
Entrez	https://www.ncbi.nlm.nih.gov/gene/3799
Dilution Range	ELISA: 1:10000, Immunochemistry: user optimized, Western Blot: 1:100-1:500
Application Notes	Kinesin-1 antibody has been tested for use in ELISA and western blot. For western blots expect a band of approximately 72 kDa in size corresponding to truncated kinesin-1 protein. Specific conditions for reactivity should be optimized by the end user.



IHC Kinesin-1 Antibody
(whole antiserum)