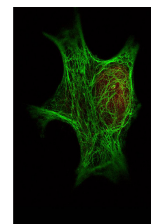


Product Datasheet

Keratin (MOUSE) Monoclonal Antibody GRP2064

Description	Anti-Keratin (MOUSE) Monoclonal Antibody
Species/Host	Mouse
Reactivity	Human
Conjugation	Unconjugated
Tested Applications	ELISA, IF, IHC-P, IP, WB
Form/Appearance	0.02 M Potassium Phosphate, 0.15 M Sodium Chloride, pH 7.2
Concentration	1.3 mg/mL
Note	For research use only.
Isotype	IgG1
Clonality	Monoclonal
Source	This protein A purified monoclonal antibody was produced by repeated immunizations with purified human cytoskeletal preparations from A431 cells.
Clone ID	C11
Uniprot ID	P48668
Entrez	https://www.ncbi.nlm.nih.gov/gene//286887
Dilution Range	ELISA: 1:5,000 - 1:20,000, Immunochemistry: 1:50 - 1:200, IF Microscopy: 1:50 - 1:200, Immunoprecipitation: 1:100, Western Blot: 1:50 - 1:200

Application Notes Anti-Keratin Antibody is suitable for ELISA, immunohistochemistry, immunoblotting and immunoprecipitation. For a positive control use skin, colon carcinoma and squamous granulocyte carcinoma cells.



Immunofluorescence
Microscopy-
Anti-Keratin Antibody