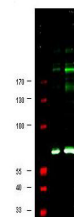


## Product Datasheet

### IRS1 pS307 (RABBIT) Antibody GRP3418

<b>Description</b>	Anti-IRS1 pS307 (RABBIT) Antibody
<b>Species/Host</b>	Rabbit
<b>Reactivity</b>	Human
<b>Conjugation</b>	Unconjugated
<b>Tested Applications</b>	ELISA, IHC-P, WB
<b>Form/Appearance</b>	0.02 M Potassium Phosphate, 0.15 M Sodium Chloride, pH 7.2
<b>Concentration</b>	1.0 mg/mL
<b>Note</b>	For research use only.
<b>Isotype</b>	IgG
<b>Clonality</b>	Polyclonal
<b>Source</b>	This affinity purified antibody was prepared from whole rabbit serum produced by repeated immunizations with a synthetic peptide corresponding to an internal region near amino acids 290-320 of human IRS1 protein.
<b>Uniprot ID</b>	<b>P35568</b>
<b>Entrez</b>	<a href="https://www.ncbi.nlm.nih.gov/gene//3667">https://www.ncbi.nlm.nih.gov/gene//3667</a>
<b>Dilution Range</b>	ELISA: 1:2,000 - 1:10,000, Immunochimistry: User Optimized, Western Blot: 1:250 - 1:1,500



Anti-IRS1 pS307 Antibody  
Western Blot