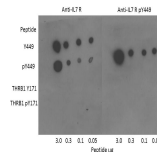


Product Datasheet

IL-7 Receptor alpha chain (RABBIT) Antibody GRP3608

Description	Anti-IL-7 Receptor alpha chain (RABBIT) Antibody
Species/Host	Rabbit
Reactivity	Mouse
Conjugation	Unconjugated
Tested Applications	ELISA, IHC-P, WB
Form/Appearance	0.02 M Potassium Phosphate, 0.15 M Sodium Chloride, pH 7.2
Concentration	1.1 mg/mL
Note	For research use only.
Isotype	IgG
Clonality	Polyclonal
Source	This affinity purified antibody was prepared from whole rabbit serum produced by repeated immunizations with a synthetic peptide corresponding to a region near the carboxy terminus of mouse IL-7 receptor protein.
Uniprot ID	P16872
Entrez	https://www.ncbi.nlm.nih.gov/gene//16197
Dilution Range	ELISA: 1:5,000-1:50,000,Immunochemistry: User Optimized,Western Blot: 1:1,000 - 1:10,000



Dot Blot - Anti-IL-7
Receptor