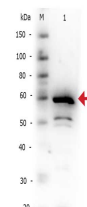


Product Datasheet

IKB α C-terminal (RABBIT) Antibody GRP1649

Species/Host	Rabbit
Reactivity	Human, Mouse, Rat
Conjugation	Unconjugated
Tested Applications	ELISA, IHC-P, WB
Form/Appearance	0.02 M Potassium Phosphate, 0.15 M Sodium Chloride, pH 7.2
Concentration	80 mg/mL
Note	For research use only.
Isotype	Antiserum
Clonality	Polyclonal
Source	IKB alpha Antibody was produced by repeated immunizations with a synthetic Ikb α peptide corresponding to a region near the C-terminus of the human protein.
Uniprot ID	P25963
Entrez	https://www.ncbi.nlm.nih.gov/gene//4792
Dilution Range	ELISA: 1:20,000 - 1:100,000, Immunochemistry: 1:1,000 - 1:5,000, Western Blot: 1:2,000 - 1:10,000
Application Notes	Anti-Ikb α Antibody is suitable for western blotting, ELISA, and IHC. Researchers should determine optimal titers for applications that are not stated below.



Rabbit anti-IKB α C term
WB