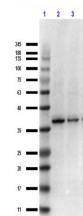


Product Datasheet

IKB β (RABBIT) Antibody GRP1662

Species/Host	Rabbit
Reactivity	Human, Mouse, Rat
Conjugation	Unconjugated
Tested Applications	ELISA, WB
Concentration	100 mg/ml
Note	For research use only.
Isotype	Antiserum
Clonality	Polyclonal
Purity	This product was prepared from monospecific antiserum by delipidation and defibrination. Anti- I κ B β may react non-specifically with other proteins. Control peptide (code #100-4186p) will compete only with the specific reaction of antiserum with I κ B β .
Source	I κ B β peptide corresponding to a region near the C-terminus of the human protein conjugated to Keyhole Limpet Hemocyanin (KLH).
Uniprot ID	Q15653
Entrez	https://www.ncbi.nlm.nih.gov/gene/4793
Dilution Range	ELISA: 1:5,000 - 1:25,000, Western Blot: 1:500 - 1:3,000



Western Blot of Rabbit
Anti-I κ B Beta C-term
Antibody