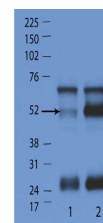


Product Datasheet

IFN Induced GTPase-like Protein (RABBIT) Antibody GRP1608

Species/Host	Rabbit
Reactivity	Mouse
Conjugation	Unconjugated
Tested Applications	ELISA, WB



IFN-GTPase western blot

Form/Appearance	0.02 M Potassium Phosphate, 0.5 M Sodium Chloride, pH 7.2
Concentration	80 mg/mL
Note	For research use only.
Isotype	IgG
Clonality	Polyclonal
Source	IFN Induced GTPase Like Protein was prepared from whole rabbit serum produced by repeated immunizations with a synthetic peptide corresponding to a N-terminal region of mouse IFN Induced GTPase Like Protein.
Uniprot ID	E9QAA8
Entrez	https://www.ncbi.nlm.nih.gov/gene//225594
Dilution Range	ELISA: 1:2000-1:10,000, Western Blot: 1:500-1:1000
Application Notes	Anti-IFN Induced GTPase Like Protein has been tested by ELISA and Western Blot. Expect a band at 48 kDa by western blotting in the appropriate cell lysate or extract.