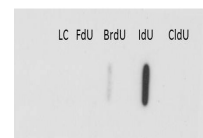


Product Datasheet

IdU (MOUSE) Monoclonal Antibody GRP2161

Description	Anti-IdU (MOUSE) Monoclonal Antibody
Species/Host	Mouse
Reactivity	Other
Conjugation	Unconjugated
Tested Applications	ELISA, FC, IF, IHC-P, WB
Form/Appearance	0.02 M Potassium Phosphate, 0.15 M Sodium Chloride, pH 7.2
Concentration	1.0 mg/ml
Note	For research use only.
Isotype	IgG
Clonality	Monoclonal
Purity	Anti-IdU Monoclonal Antibody was purified from ascites fluid by Protein A chromatography. This antibody is specific for IdU. Cross-reactivity is not observed with BrdU, CldU or FdU.
Source	Anti-IdU monoclonal antibody was produced in mice by repeated immunizations prepared via immunizations with BromodeoxyUridine-KLH followed by hybridoma development.
Clone ID	32D8.D9
Dilution Range	ELISA: 1:1000-1:10000, Flow Cytometry: User Optimized, Immunochemistry: User Optimized, IF Microscopy: User Optimized, Western Blot: 1:2000-1:5000



Western Blot of Anti-IdU Antibody