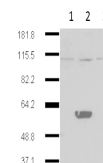


Product Datasheet

IDO2 (MOUSE) Monoclonal Antibody GRP3057

Description	Anti-IDO2 (MOUSE) Monoclonal Antibody
Species/Host	Mouse
Reactivity	Mouse
Conjugation	Unconjugated
Tested Applications	ELISA, IF, WB
Form/Appearance	0.02 M Potassium Phosphate, 0.15 M Sodium Chloride, pH 7.2
Concentration	1.0 mg/mL
Note	For research use only.
Isotype	IgG
Clonality	Monoclonal
Source	Anti-IDO2 (MOUSE) Monoclonal Antibody was produced in mouse by repeated immunizations with complete mouse IDO2 protein followed by hybridoma development.
Clone ID	1HC
Uniprot ID	Q8R0V5
Entrez	https://www.ncbi.nlm.nih.gov/gene//209176
Dilution Range	ELISA: 1:5000-1:50000, IF Microscopy: 1:50-1:100, Western Blot: 1:500-1:1500
Application Notes	Anti-IDO2 antibody has been tested for use in ELISA, Western Blot, and IF. Specific conditions for reactivity should be optimized by the end user.



Western Blot - IDO2
Antibody