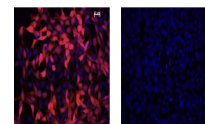


## Product Datasheet

### IDO1 (MOUSE) Monoclonal Antibody GRP3054

<b>Description</b>	Anti-IDO1 (MOUSE) Monoclonal Antibody
<b>Species/Host</b>	Mouse
<b>Reactivity</b>	Mouse
<b>Conjugation</b>	Unconjugated
<b>Tested Applications</b>	ELISA, FC, IF, IHC-P, IP, WB
<b>Form/Appearance</b>	0.02 M Potassium Phosphate, 0.15 M Sodium Chloride, pH 7.2
<b>Concentration</b>	1.0 mg/mL
<b>Note</b>	For research use only.
<b>Isotype</b>	IgG1
<b>Clonality</b>	Monoclonal
<b>Source</b>	IDO1 antibody was produced in mouse by repeated immunizations with mouse recombinant IDO1 protein followed by hybridoma development.
<b>Clone ID</b>	2E2.6
<b>Uniprot ID</b>	<b>P28776</b>
<b>Entrez</b>	<a href="https://www.ncbi.nlm.nih.gov/gene//15930">https://www.ncbi.nlm.nih.gov/gene//15930</a>
<b>Dilution Range</b>	ELISA: 1:5000-1:50000, Flow Cytometry: 0.5-1x10 <sup>6</sup> cells, Immunocytochemistry: User optimized, IF Microscopy: 1:50-1:100, Immunoprecipitation: 10-100 µL, Western Blot: 1:500-1:1500
<b>Application Notes</b>	Anti-IDO1 antibody has been tested for use in ELISA, Western Blot, IF, IHC, and Flow Cytometry. Specific conditions for reactivity should be optimized by the end user.



Immunofluorescence -  
IDO1  
Antibody