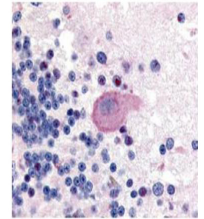


Product Datasheet

Huntington pS421 (RABBIT) Antibody GRP3415

Description	Anti-Huntington pS421 (RABBIT) Antibody
Species/Host	Rabbit
Reactivity	Human
Conjugation	Unconjugated
Tested Applications	ELISA, IHC-P, WB
Form/Appearance	0.02 M Potassium Phosphate, 0.15 M Sodium Chloride, pH 7.2
Concentration	0.96 mg/mL
Note	For research use only.
Isotype	IgG
Clonality	Polyclonal
Source	Huntingtin pS421 Antibody was prepared from whole rabbit serum produced by repeated immunizations with a synthetic peptide corresponding to an internal region near aa 400-425 of Human Huntington Disease Protein.
Uniprot ID	P42858
Entrez	https://www.ncbi.nlm.nih.gov/gene//3064
Dilution Range	ELISA: 1:10,000 - 1:40,000,Immunochemistry: 1:50 - 1:100,Western Blot: 1:500 - 1:3,000



Anti-Huntingtin pS421
Antibody
- Immunohistochemistry