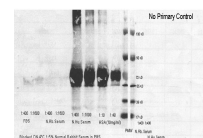


## Product Datasheet

# HUMAN SERUM ALBUMIN (RABBIT) Antibody Peroxidase Conjugated GRP3994

<b>Description</b>	Anti-HUMAN SERUM ALBUMIN (RABBIT) Antibody Peroxidase Conjugated
<b>Species/Host</b>	Rabbit
<b>Reactivity</b>	Human
<b>Conjugation</b>	HRP
<b>Tested Applications</b>	ELISA, IHC-P, WB
<b>Form/Appearance</b>	0.02 M Potassium Phosphate, 0.15 M Sodium Chloride, pH 7.2
<b>Concentration</b>	1.0 mg/mL
<b>Note</b>	For research use only.
<b>Isotype</b>	IgG
<b>Clonality</b>	Polyclonal
<b>Source</b>	Anti-Human Serum Albumin Antibody was produced by repeated immunizations with Human Serum Albumin.
<b>Uniprot ID</b>	<b>P02768</b>
<b>Entrez</b>	<a href="https://www.ncbi.nlm.nih.gov/gene//213">https://www.ncbi.nlm.nih.gov/gene//213</a>
<b>Dilution Range</b>	ELISA: 1:10,000 - 1:50,000, Immunochemistry: 1:500 - 1:2,500, Western Blot: 1:1,000 - 1:5,000
<b>Application Notes</b>	Anti-ALB antibody is suitable for western blotting. Assay by immunoelectrophoresis resulted in a single precipitin arc against anti-Peroxidase, anti-Rabbit Serum, purified human serum albumin IgG, and human Serum.



Secondary Antibodies - Immunoblot