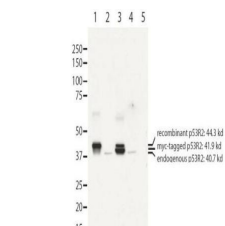


## Product Datasheet

### Human RRM2B/p53R2 (RABBIT) Antibody GRP3679

<b>Description</b>	Anti-Human RRM2B/p53R2 (RABBIT) Antibody
<b>Species/Host</b>	Rabbit
<b>Reactivity</b>	Human
<b>Conjugation</b>	Unconjugated
<b>Tested Applications</b>	ELISA, IF, IHC-P, IP, WB
<b>Form/Appearance</b>	0.02 M Potassium Phosphate, 0.15 M Sodium Chloride, pH 7.2
<b>Concentration</b>	0.82 mg/mL
<b>Note</b>	For research use only.
<b>Isotype</b>	IgG
<b>Clonality</b>	Polyclonal
<b>Source</b>	Anti-Human RRM2B/p53R2 antibody was prepared by repeated immunizations with a synthetic peptide corresponding to a region near the N-terminus of human RRM2B1 protein. A residue of cysteine was added to facilitate coupling.
<b>Uniprot ID</b>	<b>Q7LG56</b>
<b>Entrez</b>	<a href="https://www.ncbi.nlm.nih.gov/gene//50484">https://www.ncbi.nlm.nih.gov/gene//50484</a>
<b>Dilution Range</b>	ELISA: 1:3,000, Immunochemistry: User Optimized, IF Microscopy: User Optimized, Immunoprecipitation: User Optimized, Western Blot: 1 µg /mL



Anti-RRM2B antibody -  
Western  
Blot