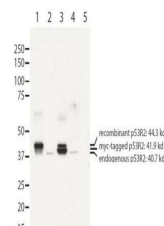


Product Datasheet

Human RRM2B/p53R2 (RABBIT) Antibody GRP3678

Description	Anti-Human RRM2B/p53R2 (RABBIT) Antibody
Species/Host	Rabbit
Reactivity	Human
Conjugation	Unconjugated
Tested Applications	ELISA, IF, IHC-P, IP, WB
Form/Appearance	0.02 M Potassium Phosphate, 0.15 M Sodium Chloride, pH 7.2
Concentration	0.82 mg/mL
Note	For research use only.
Isotype	IgG
Clonality	Polyclonal
Source	Anti-Human RRM2B/p53R2 antibody was prepared by repeated immunizations with a synthetic peptide corresponding to a region near the N-terminus of human RRM2B1 protein. A residue of cysteine was added to facilitate coupling.
Uniprot ID	Q7LG56
Entrez	https://www.ncbi.nlm.nih.gov/gene//50484
Dilution Range	ELISA: 1:3,000, Immunochemistry: User Optimized, IF Microscopy: User Optimized, Immunoprecipitation: User Optimized, Western Blot: 1 µg /mL



Anti-RRM2B antibody -
Western
Blot