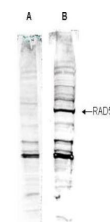


Product Datasheet

Human RAD52 (RABBIT) Antibody GRP3461

Description	Anti-Human RAD52 (RABBIT) Antibody
Species/Host	Rabbit
Reactivity	Human
Conjugation	Unconjugated
Tested Applications	ELISA, WB
Form/Appearance	0.02 M Potassium Phosphate, 0.15 M Sodium Chloride, pH 7.2
Concentration	1.0 mg/mL
Note	For research use only.
Isotype	IgG
Clonality	Polyclonal
Purity	This is an affinity purified antibody produced by immunoaffinity chromatography using the immunizing peptide after immobilization to a solid phase. Reactivity occurs against human RAD52 protein.
Source	This affinity purified antibody was prepared from whole rabbit serum produced by repeated immunizations with a synthetic peptide corresponding to an internal region near aa 350-375 of the Human Rad 52 protein.
Uniprot ID	P43351
Entrez	https://www.ncbi.nlm.nih.gov/gene//5893
Dilution Range	ELISA: 1:5,000 - 1:20,000, Western Blot: 1:500 - 1:2,000



Anti-Human RAD52
Antibody -
Western Blot