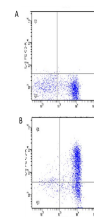


Product Datasheet

Human IL-6 (MOUSE) Monoclonal Antibody GRP2915

Description	Anti-Human IL-6 (MOUSE) Monoclonal Antibody
Species/Host	Mouse
Reactivity	Human
Conjugation	Unconjugated
Tested Applications	ELISA, FC, WB
Form/Appearance	0.02 M Potassium Phosphate, 0.15 M Sodium Chloride, pH 7.2
Concentration	1.0 mg/mL
Note	For research use only.
Isotype	IgG1
Clonality	Monoclonal
Source	This Protein A purified IL-6 monoclonal antibody was produced in mouse by repeated immunizations with mature full length recombinant human IL-6 produced in E.coli followed by hybridoma development.
Clone ID	33A12.G9
Uniprot ID	P05231
Entrez	https://www.ncbi.nlm.nih.gov/gene//3569
Dilution Range	ELISA: 1:10,000, Flow Cytometry: 0.5 mg/mL, Western Blot: 1:1000



Anti-Human IL-6 Antibody -
Flow Cytometry