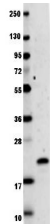


Product Datasheet

Human IL-29 (RABBIT) Antibody GRP2972

Description	Anti-Human IL-29 (RABBIT) Antibody
Species/Host	Rabbit
Reactivity	Human
Conjugation	Unconjugated
Tested Applications	ELISA, WB
Form/Appearance	0.02 M Potassium Phosphate, 0.15 M Sodium Chloride, pH 7.2
Concentration	1.0 mg/mL
Note	For research use only.
Isotype	IgG
Clonality	Polyclonal
Source	This IgG fraction antibody was prepared from rabbit antiserum after repeated immunizations with mature length recombinant human IL-29 protein produced in E.coli.
Uniprot ID	Q8IU54
Entrez	https://www.ncbi.nlm.nih.gov/gene//282618
Dilution Range	ELISA: 1:10,000,Western Blot: 1:1000



Anti-Human IL-29 Antibody
Western Blot