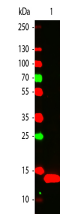


Product Datasheet

Human IL-22 (RABBIT) Antibody GRP2979

Description	Anti-Human IL-22 (RABBIT) Antibody
Species/Host	Rabbit
Reactivity	Human
Conjugation	Unconjugated
Tested Applications	ELISA, WB
Form/Appearance	0.02 M Potassium Phosphate, 0.15 M Sodium Chloride, pH 7.2
Concentration	1.0 mg/mL
Note	For research use only.
Isotype	IgG
Clonality	Polyclonal
Source	Anti-IL-22 antibody was prepared from rabbit antiserum after repeated immunizations with a truncated form of recombinant human IL-22 protein from E. coli.
Uniprot ID	Q9GZX6
Entrez	https://www.ncbi.nlm.nih.gov/gene//50616
Dilution Range	ELISA: 1:20,000 - 1:50,000, Western Blot: 1:1000-1:2000



WB - IL-22 Antibody