

## Product Datasheet

### ATR (phospho Thr1989) antibody GRP70

#### Description

The protein encoded by this gene belongs the PI3/PI4-kinase family, and is most closely related to ATM, a protein kinase encoded by the gene mutated in ataxia telangiectasia. This protein and ATM share similarity with Schizosaccharomyces pombe rad3, a cell cycle checkpoint gene required for cell cycle arrest and DNA damage repair in response to DNA damage. This kinase has been shown to phosphorylate checkpoint kinase CHK1, checkpoint proteins RAD17, and RAD9, as well as tumor suppressor protein BRCA1. Mutations of this gene are associated with Seckel syndrome. An alternatively spliced transcript variant of this gene has been reported, however, its full length nature is not known. Transcript variants utilizing alternative polyA sites exist. [provided by RefSeq]

#### Species/Host

Rabbit

#### Reactivity

Human, Mouse

#### Conjugation

Unconjugated

#### Tested Applications

ICC, IF, IHC-P, IP, WB

#### Immunogen

Carrier-protein conjugated synthetic peptide corresponding to residues around human ATR (phospho Thr1989). The exact sequence is proprietary.

#### Form/Appearance

Liquid: 1XPBS, 1% BSA, 20% Glycerol (pH7). 0.025% ProClin 300 was added as a preservative.

#### Concentration

1.57 mg/ml

#### Storage

Store as concentrated solution. Centrifuge briefly prior to opening vial. For short-term storage (1-2 weeks), store at 4°C. For long-term storage, aliquot and store at -20°C or below. Avoid multiple freeze-thaw cycles.

#### Note

For research use only.

#### Isotype

IgG

#### Clonality

Polyclonal

#### Purity

Purified by antigen-affinity chromatography.

#### Uniprot ID

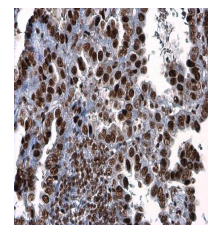
**Q13535**

#### Entrez

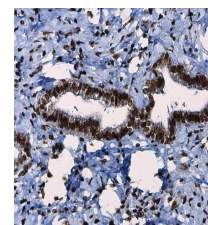
**545**

#### Dilution Range

WB: 1:500-1:3000, ICC: 1:100-1:1000, IHC-P: 1:100-1:1000, IP: 1:100-1:500



ATR (phospho Thr1989) antibody detects ATR (phospho Thr1989) protein at nucleus in human colon cancer by immunohistochemical analysis.  
Sample: Paraffin-embedded human colon cancer. ATR (phospho Thr1989) antibody (GRP522) diluted at 1:250.



ATR (phospho Thr1989) antibody detects ATR (phospho Thr1989) protein at nucleus in human breast carcinoma by immunohistochemical analysis.  
Sample: Paraffin-embedded