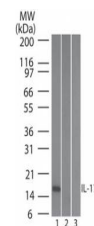


Product Datasheet

Human IL-17F (MOUSE) Monoclonal Antibody GRP2923

Description	Anti-Human IL-17F (MOUSE) Monoclonal Antibody
Species/Host	Mouse
Reactivity	Human
Conjugation	Unconjugated
Tested Applications	ELISA, WB
Form/Appearance	0.02 M Potassium Phosphate, 0.15 M Sodium Chloride, pH 7.2
Concentration	1.0mg/mL
Note	For research use only.
Isotype	IgG1
Clonality	Monoclonal
Source	Anti-IL-17F (MOUSE) Monoclonal Antibody was produced in mouse by repeated immunizations with mature full length recombinant human IL-17F produced in E.coli followed by hybridoma development.
Clone ID	4H450.1
Uniprot ID	Q96PD4
Entrez	https://www.ncbi.nlm.nih.gov/gene//112744
Dilution Range	ELISA: 1:10,000-1:50,000, Western Blot: 0.2µg /mL
Application Notes	Anti-IL-17F antibody has been tested for use in Western Blot. Specific conditions for reactivity should be optimized by the end user.



Mouse Anti-Human IL-17F
Antibody Western Blot