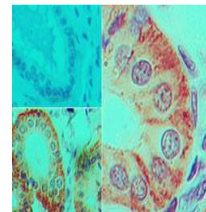


## Product Datasheet

### Human IL-17F (MOUSE) Monoclonal Antibody GRP2918

<b>Description</b>	Anti-Human IL-17F (MOUSE) Monoclonal Antibody
<b>Species/Host</b>	Mouse
<b>Reactivity</b>	Human
<b>Conjugation</b>	Unconjugated
<b>Tested Applications</b>	ELISA, IHC-P, WB
<b>Form/Appearance</b>	0.02 M Potassium Phosphate, 0.15 M Sodium Chloride, pH 7.2
<b>Concentration</b>	1.0 mg/mL
<b>Note</b>	For research use only.
<b>Isotype</b>	IgG1
<b>Clonality</b>	Monoclonal
<b>Source</b>	Anti-IL-17F (MOUSE) Monoclonal Antibody was produced in mouse by repeated immunizations with mature full length recombinant human IL-17F produced in E.coli followed by hybridoma development.
<b>Clone ID</b>	4H1629.1
<b>Uniprot ID</b>	<b>Q96PD4</b>
<b>Entrez</b>	<a href="https://www.ncbi.nlm.nih.gov/gene//112744">https://www.ncbi.nlm.nih.gov/gene//112744</a>
<b>Dilution Range</b>	ELISA: 1:10,000-1:50,000,Immunochemistry: 5µg /mL,Western Blot: 0.5µg /mL
<b>Application Notes</b>	Anti-Human IL-17F antibody has been tested for use in IHC and Western Blot. Specific conditions for reactivity should be optimized by the end user.



Mouse Anti-Human IL-17F  
Antibody  
Immunohistochemistry