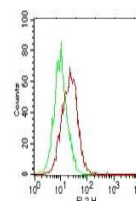


Product Datasheet

Human IL-17E (MOUSE) Biotin Conjugated Monoclonal Antibody GRP2933

Description	Anti-Human IL-17E (MOUSE) Biotin Conjugated Monoclonal Antibody
Species/Host	Mouse
Reactivity	Human
Conjugation	Biotin
Tested Applications	ELISA, FC, WB
Form/Appearance	0.02 M Potassium Phosphate, 0.15 M Sodium Chloride, pH 7.2
Concentration	1.0 mg/mL
Note	For research use only.
Isotype	IgG1
Clonality	Monoclonal
Source	Anti-IL-17E (MOUSE) Monoclonal Antibody was produced in mouse by repeated immunizations with mature full length recombinant human IL-17E produced in E.coli followed by hybridoma development.
Clone ID	11K8B1
Uniprot ID	Q9H293
Entrez	https://www.ncbi.nlm.nih.gov/gene//64806
Dilution Range	ELISA: 1:10,000-1:50,000, Flow Cytometry: 1µg /mL, Fluorochrome: 10-20, Western Blot: 0.5µg /mL
Application Notes	This purified antibody has been tested for use in Flow Cytometry and western blotting. Specific conditions for reactivity should be optimized by the end user.



Anti-IL-17E Biotin Conjugated Antibody - Flow Cytometry