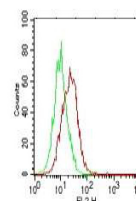


## Product Datasheet

# Human IL-17E (MOUSE) Biotin Conjugated Monoclonal Antibody GRP2933

<b>Description</b>	Anti-Human IL-17E (MOUSE) Biotin Conjugated Monoclonal Antibody
<b>Species/Host</b>	Mouse
<b>Reactivity</b>	Human
<b>Conjugation</b>	Biotin
<b>Tested Applications</b>	ELISA, FC, WB
<b>Form/Appearance</b>	0.02 M Potassium Phosphate, 0.15 M Sodium Chloride, pH 7.2
<b>Concentration</b>	1.0 mg/mL
<b>Note</b>	For research use only.
<b>Isotype</b>	IgG1
<b>Clonality</b>	Monoclonal
<b>Source</b>	Anti-IL-17E (MOUSE) Monoclonal Antibody was produced in mouse by repeated immunizations with mature full length recombinant human IL-17E produced in E.coli followed by hybridoma development.
<b>Clone ID</b>	11K8B1
<b>Uniprot ID</b>	<b>Q9H293</b>
<b>Entrez</b>	<a href="https://www.ncbi.nlm.nih.gov/gene//64806">https://www.ncbi.nlm.nih.gov/gene//64806</a>
<b>Dilution Range</b>	ELISA: 1:10,000-1:50,000, Flow Cytometry: 1µg /mL, Fluorochrome: 10-20, Western Blot: 0.5µg /mL
<b>Application Notes</b>	This purified antibody has been tested for use in Flow Cytometry and western blotting. Specific conditions for reactivity should be optimized by the end user.



Anti-IL-17E Biotin Conjugated Antibody - Flow Cytometry