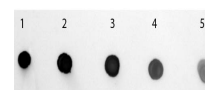


Product Datasheet

HUMAN IgM (mu chain) (GOAT) Antibody Alkaline Phosphatase Conjugated GRP4543

| | |
|----------------------------|--|
| Description | Anti-HUMAN IgM (mu chain) (GOAT) Antibody Alkaline Phosphatase Conjugated |
| Species/Host | Goat |
| Reactivity | Human |
| Conjugation | AP |
| Tested Applications | ELISA, IHC-P, WB |
| Form/Appearance | 0.05 M Tris Chloride, 0.15M Sodium Chloride, 0.001M Magnesium Chloride, 0.0001M Zinc Chloride, 50% (v/v) Glycerol; pH 8.0 |
| Concentration | 1.0 mg/mL |
| Storage | Store vial at 4 °C before opening. DO NOT FREEZE. This product is stable at 4 °C as an undiluted liquid. Dilute only prior to immediate use. Freezing alkaline phosphatase conjugates will result in a substantial loss of enzymatic activity. |
| Note | For research use only. |
| Isotype | IgG |
| Clonality | Polyclonal |
| Source | Human IgM whole molecule |
| Dilution Range | ELISA: 1:2,000 - 1:10,000, Immunochemistry: 1:200 - 1:1,000, Western Blot: 1:500 - 1:2,500 |



Human IgM (mu chain)
Antibody
Alkaline Phosphatase
Conjugated - Dot Blot

Application Notes Anti-Human IgM (mu heavy chain) is suitable for immunoblotting (western or dot blot), ELISA, immunoelectron microscopy and immunohistochemistry as well as other antibody based enzymatic assays requiring lot-to-lot consistency.