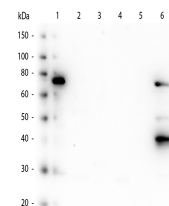


## Product Datasheet

### HUMAN IgM (Fc5 $\mu$ ) (MOUSE) Antibody GRP2914

<b>Description</b>	Anti-HUMAN IgM (Fc5 $\mu$ ) (MOUSE) Antibody
<b>Species/Host</b>	Mouse
<b>Reactivity</b>	Human
<b>Conjugation</b>	Unconjugated
<b>Tested Applications</b>	ELISA, WB
<b>Form/Appearance</b>	0.02 M Potassium Phosphate, 0.15 M Sodium Chloride, pH 7.2
<b>Concentration</b>	1.0 mg/ml
<b>Note</b>	For research use only.
<b>Isotype</b>	IgG2b
<b>Clonality</b>	Monoclonal
<b>Source</b>	Anti-Human IgM Fc5 $\mu$ was produced by repeated immunization with Human IgM Fc5 $\mu$ fragment in mice.
<b>Clone ID</b>	22G1.H8
<b>Dilution Range</b>	ELISA: 1:1000-1:10000, Western Blot: 1:1000-1:2000
<b>Application Notes</b>	Human IgM Fc5 $\mu$ antibody is suitable for immunoblotting (western or dot blot), ELISA, and immunohistochemistry requiring extremely low background levels, lot-to-lot consistency, high titer and specificity.



Human IgM Fc5 $\mu$   
Monoclonal  
Antibody