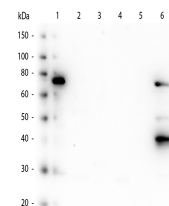


Product Datasheet

HUMAN IgM (Fc5 μ) (MOUSE) Antibody GRP2914

Description	Anti-HUMAN IgM (Fc5 μ) (MOUSE) Antibody
Species/Host	Mouse
Reactivity	Human
Conjugation	Unconjugated
Tested Applications	ELISA, WB
Form/Appearance	0.02 M Potassium Phosphate, 0.15 M Sodium Chloride, pH 7.2
Concentration	1.0 mg/ml
Note	For research use only.
Isotype	IgG2b
Clonality	Monoclonal
Source	Anti-Human IgM Fc5 μ was produced by repeated immunization with Human IgM Fc5 μ fragment in mice.
Clone ID	22G1.H8
Dilution Range	ELISA: 1:1000-1:10000, Western Blot: 1:1000-1:2000
Application Notes	Human IgM Fc5 μ antibody is suitable for immunoblotting (western or dot blot), ELISA, and immunohistochemistry requiring extremely low background levels, lot-to-lot consistency, high titer and specificity.



Human IgM Fc5 μ
Monoclonal
Antibody