

Product Datasheet

HUMAN IgG F(c) (RABBIT) Antibody Alkaline Phosphatase Conjugated GRP4606

Description Anti-HUMAN IgG F(c) (RABBIT) Antibody Alkaline Phosphatase Conjugated

Species/Host Rabbit

Reactivity Human

Conjugation AP

Tested Applications ELISA, IHC-P, WB

Form/Appearance 0.05 M Tris Chloride, 0.15M Sodium Chloride, 0.001M Magnesium Chloride, 0.0001M Zinc Chloride, 50% (v/v) Glycerol; pH 8.0

Concentration 1.0 mg/mL

Storage Store vial at 4 °C before opening. DO NOT FREEZE. This product is stable at 4 °C as an undiluted liquid. Dilute only prior to immediate use. Freezing alkaline phosphatase conjugates will result in a substantial loss of enzymatic activity.

Note For research use only.

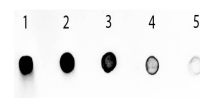
Isotype IgG

Clonality Polyclonal

Source Anti-Human IgG F(c) was produced by repeated immunization with Human Fc fragment in rabbit.

Dilution Range ELISA: 1:2,000 - 1:10,000, Immunochemistry: 1:200 - 1:1,000, Western Blot: 1:500 - 1:2,500

Application Notes Anti-Human IgG F(c) antibody is suitable for use in immunoelectrophoresis, western-blot, competitive western-blot, ELISA and competitive ELISA assays. Specific conditions for reactivity and signal detection should be optimized by the end user.



Human IgG Fc Antibody
Alkaline
Phosphatase Conjugated -
Dot
Blot