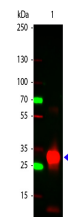


Product Datasheet

HUMAN IgG F(c) (RABBIT) Antibody GRP4582

Description	Anti-HUMAN IgG F(c) (RABBIT) Antibody
Species/Host	Rabbit
Reactivity	Human
Conjugation	Unconjugated
Tested Applications	ELISA, IHC-P, WB
Form/Appearance	0.02 M Potassium Phosphate, 0.15 M Sodium Chloride, pH 7.2
Concentration	5.1 mg/mL
Note	For research use only.
Isotype	IgG
Clonality	Polyclonal
Source	Anti-Human IgG F(c) fragment was produced by repeated immunization with Human IgG F(c) fragment in rabbit.
Dilution Range	ELISA: 1:375,000, Immunochemistry: 1:1,000 - 1:6,000, Western Blot: 1:3,000 - 1:30,000
Application Notes	Anti-Human IgG F(c) fragment is suitable for use in immunoelectrophoresis, western-blot, competitive western-blot, ELISA and competitive ELISA assays. Specific conditions for reactivity and signal detection should be optimized by the end user.



Human IgG F(c) Antibody -
Western Blot