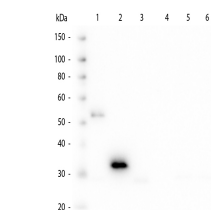


## Product Datasheet

### HUMAN IgG F(c) (MOUSE) Antibody GRP2913

<b>Description</b>	Anti-HUMAN IgG F(c) (MOUSE) Antibody
<b>Species/Host</b>	Mouse
<b>Reactivity</b>	Human
<b>Conjugation</b>	Unconjugated
<b>Tested Applications</b>	ELISA, WB
<b>Form/Appearance</b>	0.02 M Potassium Phosphate, 0.15 M Sodium Chloride, pH 7.2
<b>Concentration</b>	1.0 mg/ml
<b>Note</b>	For research use only.
<b>Isotype</b>	IgG1
<b>Clonality</b>	Monoclonal
<b>Source</b>	Anti-Human IgG F(c) monoclonal antibody was produced by repeated immunization with Human IgG F(c) fragment in mice.
<b>Clone ID</b>	3D8.H7.D4
<b>Dilution Range</b>	ELISA: 1:-1000-1:10000,Western Blot: 1:1000 - 1:2000
<b>Application Notes</b>	Human IgG F(c) antibody is suitable for immunoelectrophoresis, western-blot, competitive western-blot, ELISA and competitive ELISA assays. Specific conditions for reactivity and signal detection should be optimized by the end user.



Human Fc Monoclonal Antibody